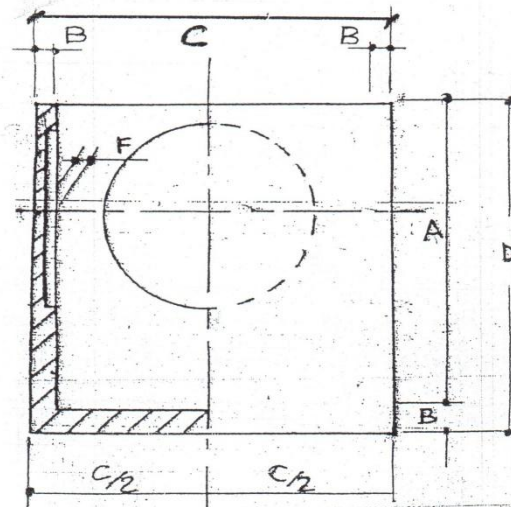


## STAMPI POZZETTI



N°1 STAMPO POZZETTO/PROLUNGA multiplo n°6 elementi  
N°1 STAMPO POZZETTO/PROLUNGA multiplo n°4 elementi  
N°1 STAMPO POZZETTO/PROLUNGA singolo.

A= 300 B= 30 C= 360 D= 330  
A= 400 B= 35 C= 470 D= 435  
A= 600 B= 50 C= 800 D= 650